

## M-CONCORDE ASSEMBLY

### **Un-assembly of the non-Concorde frame.**

\* Unscrew the nut in the cross leg at the side of the turntable.

Take the leg off.

\* Unscrew the nut in the cross leg at the side of the tensioner.

Take that leg off also.

\* Pull the long bolt out towards the tensioner.

\* Remove the nut on the bolt.

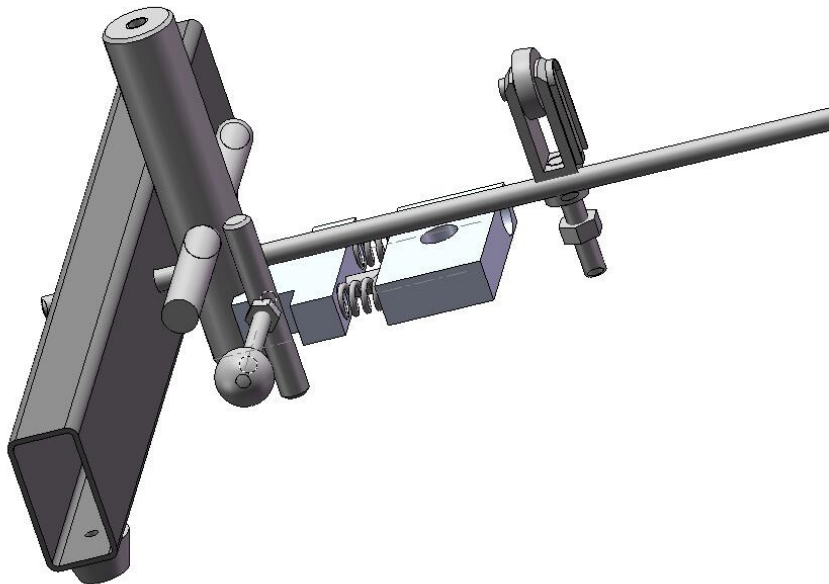
\* Pull the shaft out of the frame.

\* Remove the bush and washer around the shaft.

\* Press the nylon bush out of the frame from the bottom through the hole with a hammer and a small piece of wood or plastic.

\* Remove the table stop.

### **Assembly of the Concorde frame.**



\* Slide the “spring block” into the frame with the nut pointing upwards.

\* Fix the “spring-block” with the Alan bolt from the bottom of the frame.

\* Add a little grease in the threaded hole in the Concorde shaft.

\* Put some grease on the middle of the M10x120 bolt.

\* Hold the shaft through the upper hole in the frame and screw the M10 bolt through the side hole in the frame into the shaft until the same length comes out on both sides.

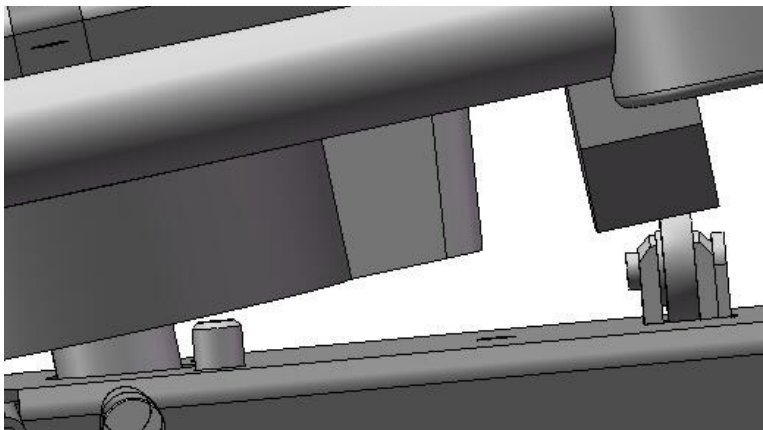
\* Add a washer and a M10 nut on both sides of the M10 screw.

- \* Tighten both nuts not to stiff.
- \* Check if the shaft is positioned in the middle of the centre hole.
- \* Check if the shaft swivels freely. If not it clamps to one site of the slot in the bottom of the frame and the position needs adjustment.
- \* Put a turntable on the shaft and check if it locks in all positions.

If not: adjust the position of the shaft by rotating both nuts in the same direction with the shaft. (The position of the shaft will adjust then)

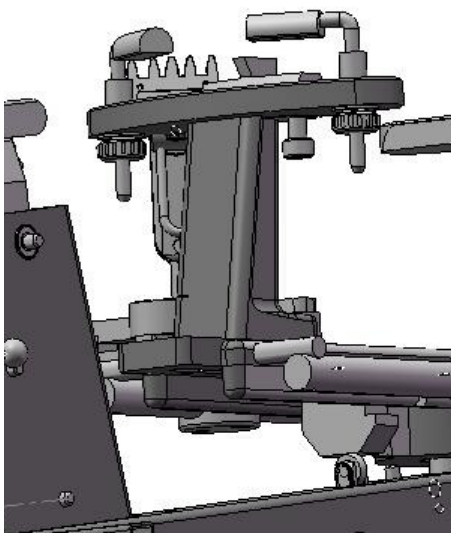
- \* Unscrew the long bolt that holds both spring blocks together, so that the pressure of the springs works on the shaft.
- \* Fix both cross legs to the frame by tightening the nuts in both legs firmly. Put the frame on a flat service so that all 4 buttons are on the table while the legs are tightened.
- \* Insert the bracket with the lifting-wheel into the square hole, while you move the thread a little to the side with a screwdriver through the hole of the table stop.

The smaller diameter of the wheel should be at the side of the turntable.



- \* Fix the bracket at the bottom of the frame with the nut and washer.
- \* Tighten the Alan bolt that holds the “spring block”.
- \* Put the turntable on the shaft and push it down to check if it tilts right.

### **Fixing the cam to the turntable.**



- \* It is important that the cam is fixed to the turntable in the right position and direction:
  - In the right direction.
  - At the inner end of the slot in the turntable, at the throat side of the table
- \* Remove the cover from the double sided tape.
- \* Support the turntable upside down in the middle on a heavy piece of wood.

\* Hold the cam in the right position and hammer it lightly into the slot until it holds a little.  
**TAKE CARE NOT TO DAMAGE THE RIBS!**

\* Take a piece of wood or plastic that is smaller than the distance between both ribs at the bottom.

\* Hold the piece of wood between the ribs and hammer the cam into the slot until the bottom with the tape is level with the surface of the turntable.

\* The system is ready for use now.

-----

